



Ypsomed®
On

Go for simply connected.



swissmade +

Ypsomed® On – The pre-filled autoinjector with integrated connectivity.

- Integrated sensor and connectivity to capture injection data
- Easy 2-step handling and fully automated injection logging
- Visual end-of-injection feedback directly on the device including the holding time
- Seamless integration into digital therapy management systems
- Sustainable design enables easy separation of electronics and battery
- Leveraging the market-proven Ypsomed® 1 mL platform for short time-to-market



More confidence. More success. With Ypsomed Delivery Systems.

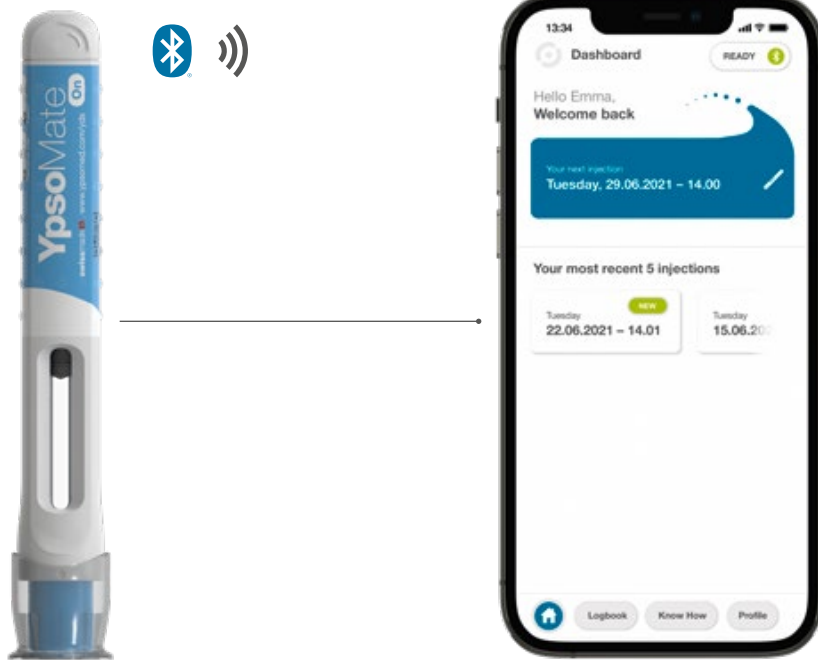
YPSOMED
SELF CARE SOLUTIONS



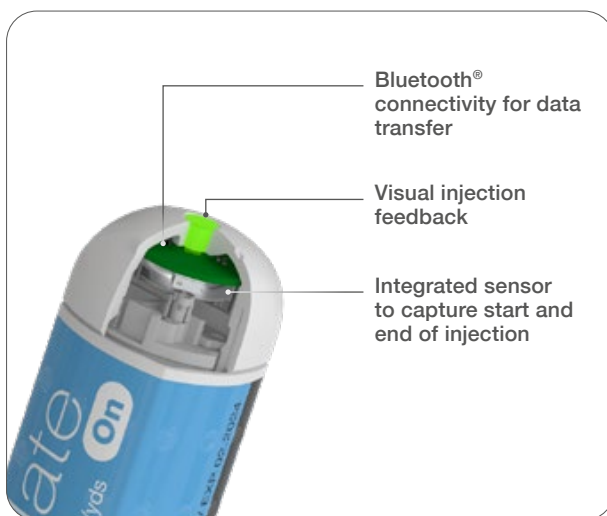
YpsoMate® On

Providing automated injection logging

The integrated connectivity of YpsoMate® On automatically logs injections and provides users a visual end-of-injection feedback directly on the device. This allows for more reliable drug delivery and data capture provides assistance for adherence and therapy management. Based on the market-proven two-step handling concept, this autoinjector stands out with its seamless capturing of therapy-relevant injection data combined with easy handling.



Mobile app is for demonstration purpose only.



Integrated sensors and connectivity

YpsoMate® On senses the start and end of the injection and tracks injection time, date and duration. It supports the seamless provision of therapy-relevant data to patients, physicians and caregivers.



Seamless device-to-user connection

No pairing required for data transfer to smartphone

YpsoMate[®] On includes an advanced Bluetooth[®] proximity measurement protocol which automatically connects the injection device and the smartphone. This simplifies the user journey by removing the need for pairing. The injection data is automatically transferred to the user's therapy management app and the associated cloud.

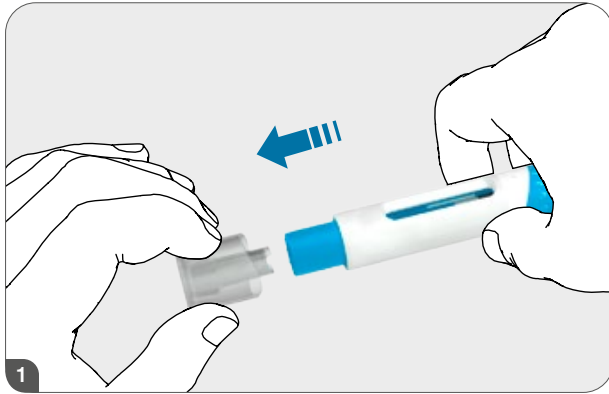


Mobile app is for demonstration purpose only.



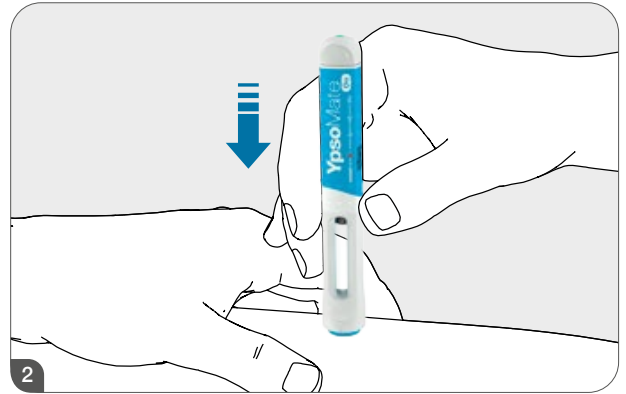
User journey and visual injection feedback

Easy handling and automated injection logging



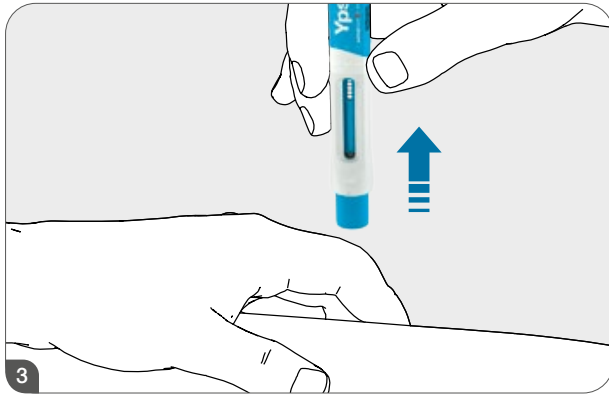
Remove cap

Remove the protective cap at the front of the device.



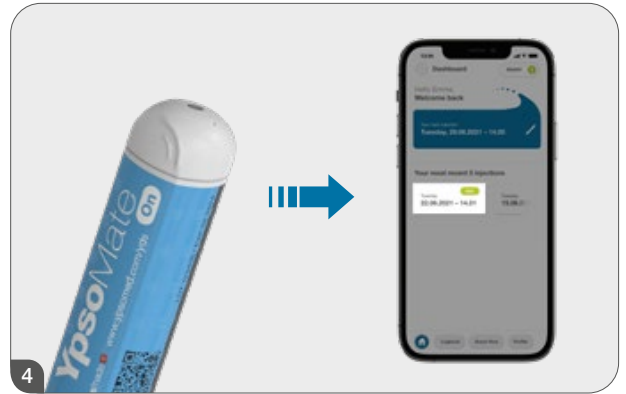
Inject

Push the device against the injection site. The blinking green status feedback signals ongoing injection.



Remove from skin

Remove the device from skin when the status feedback turns steady green.



Check your injection logbook

Check your therapy management app for successful data transfer¹.



These handling instructions are for demonstration purpose only. They do not replace the instructions for use of the customer product.

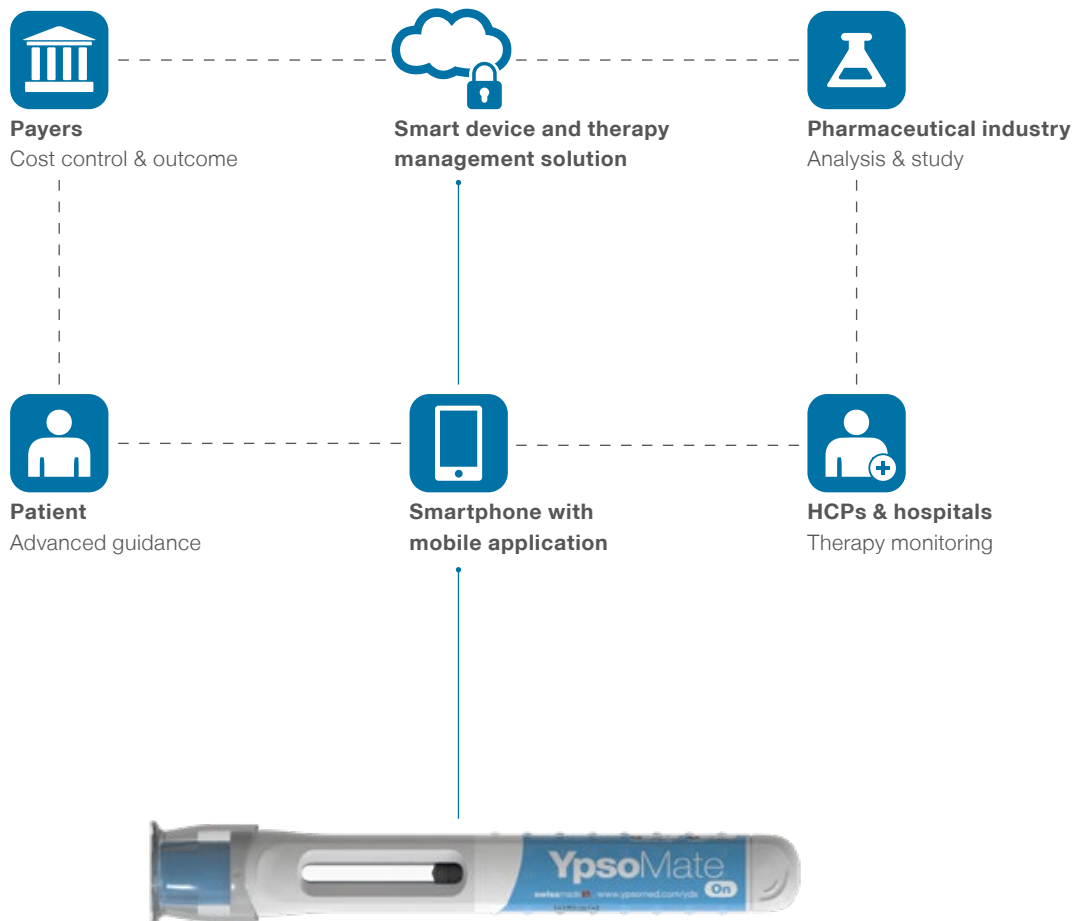


Integration into digital therapy management systems

Seamless and secure integration

YDS SmartServices allows the seamless integration of YpsoMate[®] On in a broader digital ecosystem. The digital services provide a turnkey solution for secure smart device integration into third-party therapy management systems.

Injection data can be leveraged to assist patients, caregivers and healthcare professionals in conjunction with adherence and therapy management.



Smart devices to assist adherence and therapy management



Sustainable design

Easy separation of battery and electronics

YpsoMate® On is designed with a focus on separability for take-back, re-use or recycling of its components. The connectivity module is integrated into the end cap and can be separated from the syringe and the device parts.

- Sustainable materials and optimised supply chain minimize the environmental footprint
- Connectivity module and device components can be recovered through take-back programs
- Easy separation of battery and electronics simplifies recycling



Separable connectivity module.



Leverage the YpsoMate® platform

De-risk development and shorten time-to-market

YpsoMate® On is based on the market-proven YpsoMate® platform and handling concept. It includes the same spring-driven drug delivery mechanism for an effortless injection process. The underlying YpsoMate® core technology is well-established and approved by major regulatory agencies.

Design for manufacturing has been a guiding principle for YpsoMate® On. We strive for compatibility with existing YpsoMate® manufacturing and end-assembly lines for rapid scale-up and short time-to-market.



YpsoMate® 1.0 mL

Leverage the market-proven YpsoMate® platform



YpsoMate® On 1.0 mL



Dimensions

Facts and figures



Device specifications

Primary container 1 mL long ½" PFS, with cut flange or small round flange

Fill volume 0.2–1.0 mL

Dosing Fixed, complete content

Viscosity 1–35 cP²

Needle diameter 29G TW and larger

Injection time <10 s

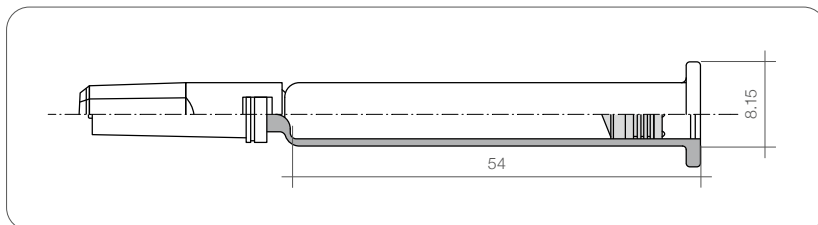
PFS needle shield Rigid or soft

Needle insertion depth 5–8 mm

End of injection feedback Audible and visual

Weight 40 g incl. glass PFS

Syringe dimensions (mm)



Standard device compatible with 1 mL ½" staked needle syringes with cut flange or small round flange

¹ For automated data transfer we assume that the smartphone's Bluetooth[®] is activated.

² Feasibility testing with filled syringes recommended for new drugs. With a larger needle diameter viscosities above 100 cP are feasible.

Disclaimer:

The information on this website represents the current state of development and is for demonstration purpose only. The market authorization holder of the final product is responsible for any labeling material inclusive claims.

The Bluetooth[®] word mark and logos are registered trademarks owned by Bluetooth SIG Inc., and any use of such marks by Ypsomed is under license.



More **confidence.**
More **success.**
With **Ypsomed Delivery Systems.**



Pen systems



Autoinjector systems



Patch injector systems



Smart services

Ypsomed Delivery Systems provides a complete range of drug delivery products and services to biopharmaceutical companies. We offer everything from development and design to manufacturing and packaging, giving patients and customers more confidence and leading to more market success.